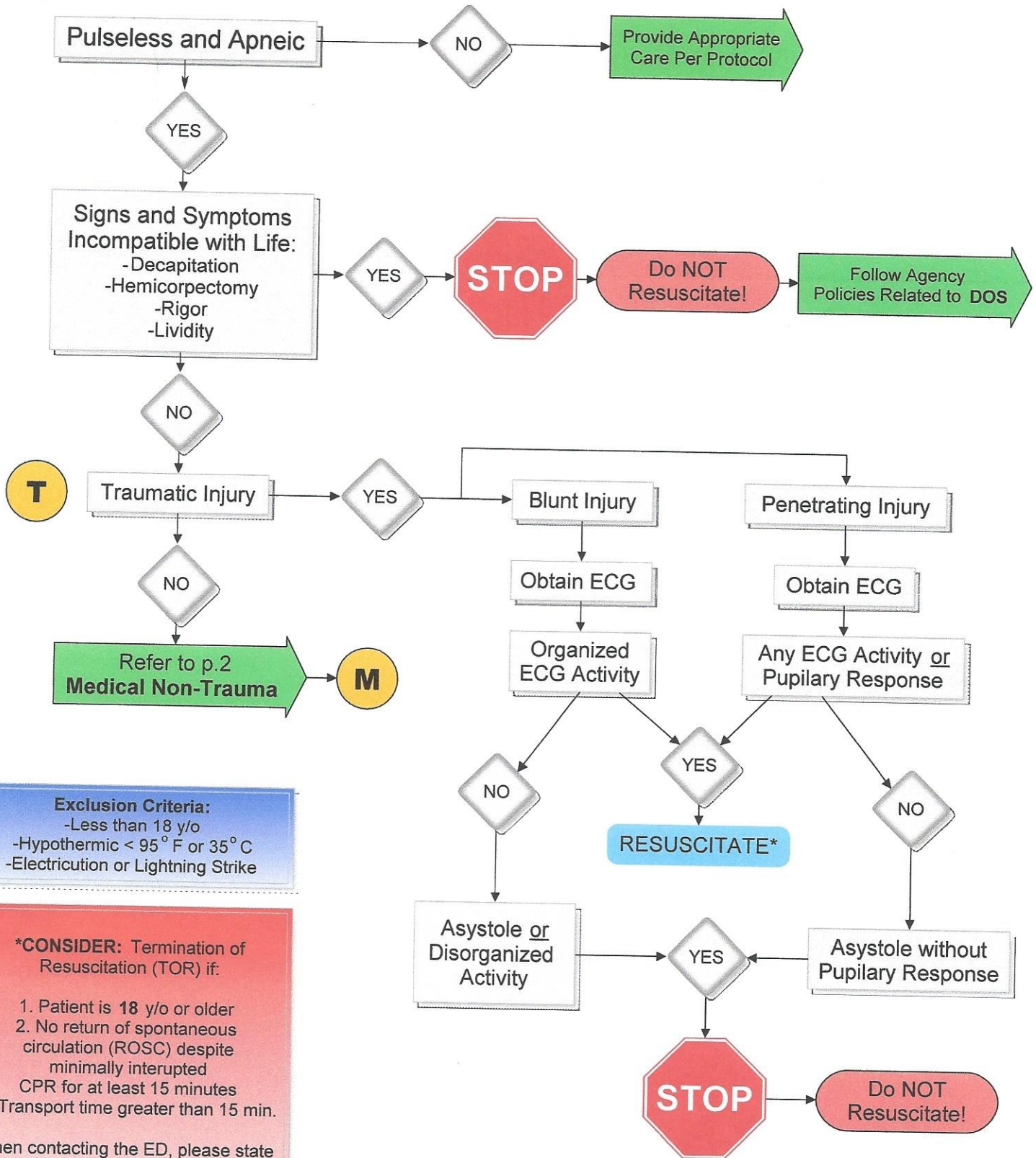


CARDIOPULMONARY ARREST DECISION MATRIX



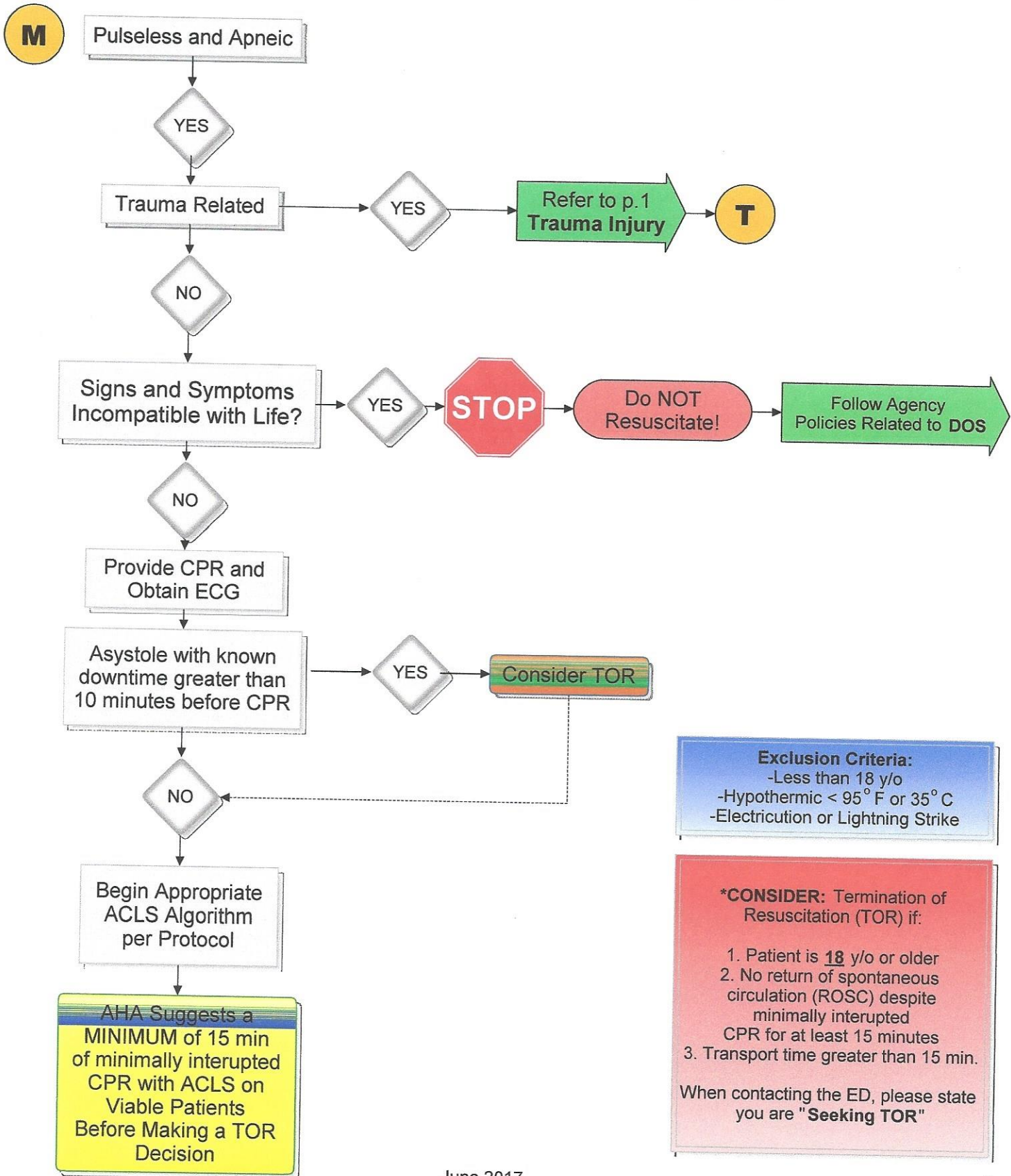
Exclusion Criteria:
 -Less than 18 y/o
 -Hypothermic < 95° F or 35° C
 -Electricution or Lightning Strike

***CONSIDER:** Termination of Resuscitation (TOR) if:

1. Patient is 18 y/o or older
2. No return of spontaneous circulation (ROSC) despite minimally interrupted CPR for at least 15 minutes
3. Transport time greater than 15 min.

When contacting the ED, please state you are "Seeking TOR"

CARDIOPULMONARY ARREST DECISION MATRIX



Exclusion Criteria:
 -Less than 18 y/o
 -Hypothermic < 95° F or 35° C
 -Electricution or Lightning Strike

***CONSIDER:** Termination of Resuscitation (TOR) if:

1. Patient is **18** y/o or older
2. No return of spontaneous circulation (ROSC) despite minimally interrupted CPR for at least 15 minutes
3. Transport time greater than 15 min.

When contacting the ED, please state you are "**Seeking TOR**"